

CADDO PARISH COMMISSION  
505 TRAVIS STREET, GOVERNMENT PLAZA  
PUBLIC NOTICE  
SPECIAL MEETING AGENDA

(Virtual)

Streaming at [www.facebook.com/parishofcaddo](http://www.facebook.com/parishofcaddo) & [www.youtube.com/user/parishofcaddois](http://www.youtube.com/user/parishofcaddois)

August 20, 2020

2:00 P.M.

1. ROLL CALL:

Commissioners:

Hopkins	District 1	Gage-Watts	District 7
Johnson	District 2	Taliaferro	District 8
Jackson	District 3	Atkins	District 9
Young	District 4	Chavez	District 10
Burrell	District 5	Lazarus	District 11
Cawthorne	District 6	Epperson	District 12

2. INVOCATION:

3. PLEDGE OF ALLEGIANCE:

4. CERTIFICATE OF TELECONFERENCE

4.I. Certificate Of Teleconference 08.20.20

Documents:

[TELECONFERENCE SPECIAL MEETING CERTIFICATION 08-20-20.PDF](#)

5. CITIZENS COMMENTS:

Citizens who wish to address the Committee, please fill out a comment card by clicking [HERE](#) and submit to the Commission Clerk's Office. Individual comments are limited to 3 minutes and will be read aloud during the Public Comments section of this agenda. Citizens may also address the Committee by calling the Commission Clerk's Office at (318) 226-6596 during the Public Comments section of this agenda.

6. PUBLIC HEARING ON ORDINANCES:

6.I. Ordinance No. 5963 2020

AN ORDINANCE TO SET THE GENERAL PURPOSE AND SPECIAL PURPOSE MILLAGES PROVIDING FOR MILLAGE RATE ADJUSTMENTS, AS ALLOWED BY ARTICLE VII, SECTION 23 OF THE LOUISIANA CONSTITUTION OF 1974 AND LA R.S. 47:1705 (B), LEVYING AND IMPOSING TAXES AND ASSESSMENTS FOR 2020 ON ALL THE PROPERTY SUBJECT TO TAXATION IN THE PARISH OF CADDO, AND TO OTHERWISE PROVIDE WITH RESPECT THERETO

(Finance)

Documents:

[ORD-TAX MILLAGES.PDF](#)

6.II. Ordinance No. 5964 Of 2020

AN ORDINANCE SETTING THE ASSESSMENT OF PROPERTY CLASSIFIED AS  
TIMBERLANDS AND TO INSTRUCT THE ASSESSOR TO INCLUDE SAID  
ASSESSMENT ON THE TAX ROLL OF THE PARISH OF CADDO FOR THE YEAR  
2020, AND TO OTHERWISE PROVIDE WITH RESPECT THERETO

(Finance)

Documents:

[ORD- TIMBER MILLAGE.PDF](#)

6.III. Ordinance No. 5965 Of 2020

AN ORDINANCE TO ADOPT THE VALUES FIXED, OR TO BE FIXED BY THE  
LOUISIANA TAX COMMISSION ON ALL ASSESSMENTS FOR RAILWAYS AND  
OTHER PUBLIC SERVICE CORPORATIONS, AND TO INSTRUCT THE ASSESSOR  
TO EXTEND SUCH ASSESSMENTS AND VALUES ON THE TAX ROLL OF THE  
PARISH OF CADDO FOR THE YEAR 2020, AND TO OTHERWISE PROVIDE WITH  
RESPECT THERETO

(Finance)

Documents:

[ORD- RAIL MILLAGE.PDF](#)

6.IV. Ordinance No. 5966 Of 2020

AN ORDINANCE SETTING THE PARISH MILLAGE FOR THE PURPOSE OF  
PAYING PRINCIPAL AND INTEREST, DUE IN 2020 ON OUTSTANDING PARISH  
BOND ISSUES AND TO INSTRUCT THE ASSESSOR TO INCLUDE SAID MILLAGE  
ON THE TAX ROLL OF THE PARISH OF CADDO FOR THE YEAR 2020, AND TO  
OTHERWISE PROVIDE WITH RESPECT THERETO

(Finance)

Documents:

[ORD- BOND MILLAGE.PDF](#)

6.V. Ordinance No. 5967 Of 2020

AN ORDINANCE AMENDING THE BUDGET OF ESTIMATED REVENUES AND  
EXPENDITURES FOR THE GENERAL FUND FOR THE YEAR 2020 TO PROVIDE  
AN APPROPRIATION FOR COVID-19 TESTING SITES AND SMALL BUSINESS  
SUPPORT BY ISSUING "COVID KITS" AND TO OTHERWISE PROVIDE WITH  
RESPECT THERETO

(Commissioners Cawthorne & Jackson)

Documents:

[ORD 5967 OF 2020.PDF](#)  
[COVID-19- UPDATED BUDGET.PDF](#)  
[CADDO PARISH COMMISSIONER COVID-19 FUNDING  
PROPOSAL\\_7.23.2020\\_FINAL.PDF](#)

## 7. ADJOURN:

To all persons desiring to attend and observe a meeting of the Caddo Parish Commission, or who wish to present information to the body: If you have physical limitations that require special accommodations in order for you to attend and participate in a meeting of the Caddo Parish Commission, please contact the office of the Caddo Parish Commission Clerk at (318) 226-6596, at least 24 hours in advance of the meeting so that an effort can be made to provide those accommodations.

**CERTIFICATE OF TELECONFERENCE AND/OR VIDEO  
CONFERENCE OF THE CADDO PARISH COMMISSION  
SPECIAL MEETING OF AUGUST 20th, 2020  
IN ACCORDANCE WITH R.S. 42:17.1**

**WHEREAS**, the Governor of the State of Louisiana has declared a statewide Public Health emergency, inclusive of Caddo Parish, in Proclamation Number 25 JBE 2020; and,

**WHEREAS**, the Governor, has further extended that declaration via Proclamations Number 96 JBE 2020 and Number 97 JBE 2020; and

**WHEREAS**, R.S. 42:17.1 allows members of political subdivisions to participate in its meetings electronically under certain limited circumstances.

**THEREFORE**, in accordance with the Provisions of R.S. 42:17.1, the presiding officer of the Caddo Parish Commission hereby certifies that this meeting is to address matters that are:

- (a) directly related to the public Commission's response to the Coronavirus Pandemic and are critical to the health, safety, or welfare of the public.
- (b) that if they are delayed will cause curtailment of vital public services or severe economic dislocation and hardship.
- (c) critical to continuation of the business of the Commission and that are not able to be postponed to a meeting held in accordance with the other provisions of Open Meetings Law due to a legal requirement or other deadline that cannot be postponed or delayed by the public body.

Date: August 19th, 2020

  
\_\_\_\_\_  
**Mario Chavez**  
**Caddo Parish Commission President**

**ORDINANCE NO. OF 2020**

BY THE CADDO PARISH COMMISSION:

**AN ORDINANCE TO SET THE GENERAL PURPOSE AND SPECIAL PURPOSE MILLAGES PROVIDING FOR MILLAGE RATE ADJUSTMENTS, AS ALLOWED BY ARTICLE VII, SECTION 23 OF THE LOUISIANA CONSTITUTION OF 1974 AND LA R.S. 47:1705 (B), LEVYING AND IMPOSING TAXES AND ASSESSMENTS FOR 2020 ON ALL THE PROPERTY SUBJECT TO TAXATION IN THE PARISH OF CADDO, AND TO OTHERWISE PROVIDE WITH RESPECT THERETO**

WHEREAS, it is necessary for the Caddo Parish Commission (the "Commission") acting as the governing authority of Caddo Parish, Louisiana (the "Parish"), to levy various taxes for the year 2020; and

WHEREAS, it is necessary to adjust the Parish millages as a result of the quadrennial reappraisal and valuation of the property subject to taxation within the Parish, in proportion to the increase in the 2020 taxable assessed valuation of the Parish;

WHEREAS, a public hearing was held by the Commission on the subject of the proposed millage adjustment in accordance with the open meetings law and the additional requirements of Article VII, Section 23(C) of the Louisiana Constitution of 1974 and LA R.S. 47:1705(B).

NOW, THEREFORE, BE IT ORDAINED, by the Caddo Parish Commission, in due, legal and regular session convened, that the following general purpose and special millages (that is, fractional mills on the dollar) on the assessed valuation of all property subject to taxation in the whole of Caddo Parish, Louisiana be and the same are hereby levied at the following adjusted rates for the year 2020, in accordance with Article VII, Section 23(C) of the Louisiana Constitution of 1974 and LA R.S. 47:1705, as applicable:

	<b>2020 Levy Rate</b>	<b>Maximum Authorized Rate</b>
<b>General:</b>		
<b>General Alimony</b> - For all property lying outside of cities and towns, as described below	6.13 mills	6.13 mills
<b>Exempted Municipalities</b> - For all property lying within the confines of incorporated cities and towns having a population in excess of 1,000 and which maintain a system of street paving and those being Shreveport, Vivian and Bossier City	3.06 mills	3.06 mills
<b>Special Purpose:</b>		
<b>Public Health:</b>		
For the creation and support of public health centers in the parish	.88 mills	.88 mills
For the maintenance and operation of public health centers in the Parish and portion rededicated for payment of mandatory costs of the criminal justice system	1.29 mills	1.29 mills
<b>Shreve Memorial Library:</b>		
For the acquiring, equipping, construction, improving, maintaining and operating the public library system	4.71 mills	4.71 mills
For the maintenance and operation of parish library facilities and portion rededicated to payment of mandatory costs of the criminal justice system	4.63 mills	4.63 mills

**Juvenile Court:**

For the maintenance and operation for the juvenile court, and juvenile detention home facilities 2.00 mills 2.00 mills

**Detention Facilities:**

For the maintenance and operation of detention facilities and portion rededicated for payment of mandatory costs of the criminal justice system 5.48 mills 5.48 mills

**Courthouse Maintenance:**

For the maintenance and operation of parish courthouse and other building facilities 2.76 mills 2.76 mills

**Public Works:**

For the maintenance and operation of road, bridge, drainage, garbage collection, and mandatory costs of the criminal justice system 5.92 mills 5.92 mills

**Public Facilities:**

For the maintenance and operation of public facilities, specifically road and bridge, parks and recreation, garbage collection and drainage .84 mills .84 mills

**Biomedical Research:**

For the promotion of economic development through the Biomedical Research Foundation of Northwest Louisiana and portion rededicated to mandatory costs of the criminal justice system 1.73 mills 1.76 mills

BE IT FURTHER ORDAINED, that the Commission Clerk shall give notice of this ordinance to the Assessor of Caddo Parish, Louisiana, and instruct him to levy and assess each tax as set forth herein for the year 2020, and the tax collector of Caddo Parish, Louisiana shall collect and remit the same to said taxing authority in accordance with law.

BE IT FURTHER ORDAINED, that if any provision or item of this ordinance or the application thereof is held invalid, such invalidity shall not affect other provisions, items or applications which can be given effect without the invalid provisions, items or applications, and to this end, the provisions of this ordinance are hereby declared severable.

BE IT FURTHER ORDAINED, that this ordinance shall take effect ten (10) days after publication in the official journal.

BE IT FURTHER ORDAINED, that all ordinances or parts thereof in conflict herewith are hereby repealed.

**Approved as to legal form:**

\_\_\_\_\_  
**Parish Attorney**

\_\_\_\_\_  
**Date**

**ORDINANCE NO. OF 2020**

BY THE CADDO PARISH COMMISSION:

AN ORDINANCE SETTING THE ASSESSMENT OF PROPERTY CLASSIFIED AS TIMBERLANDS AND TO INSTRUCT THE ASSESSOR TO INCLUDE SAID ASSESSMENT ON THE TAX ROLL OF THE PARISH OF CADDO FOR THE YEAR 2020, AND TO OTHERWISE PROVIDE WITH RESPECT THERETO

BE IT ORDAINED, by the Caddo Parish Commission in due, legal, and regular session convened, that the Tax Assessor of Caddo Parish be authorized and instructed to assess property in Caddo Parish, classified as timberlands at eight cents (\$.08) per acre for the year 2020.

BE IT FURTHER ORDAINED, that, the Commission Clerk shall give notice of this ordinance to the Assessor of Caddo Parish, Louisiana, and instruct him to levy and assess the applicable tax, at the above stated rate, upon these values as set forth herein for the year 2020.

BE IT FURTHER ORDAINED, that if any provision or item of this ordinance or the application thereof is held invalid, such invalidity shall not affect other provisions; items or applications which can be given effect without the invalid provisions, items or applications, and to this end, the provisions of this ordinance are hereby declared severable.

BE IT FURTHER ORDAINED, that this ordinance shall take effect ten (10) days after publication in the official journal.

BE IT FURTHER ORDAINED, that all ordinances or parts thereof in conflict herewith are hereby repealed.

Approved as to legal form:

\_\_\_\_\_  
Parish Attorney

\_\_\_\_\_  
Date

**ORDINANCE NO. of 2020**

BY THE CADDO PARISH COMMISSION:

AN ORDINANCE TO ADOPT THE VALUES FIXED, OR TO BE FIXED BY THE LOUISIANA TAX COMMISSION ON ALL ASSESSMENTS FOR RAILWAYS AND OTHER PUBLIC SERVICE CORPORATIONS, AND TO INSTRUCT THE ASSESSOR TO EXTEND SUCH ASSESSMENTS AND VALUES ON THE TAX ROLL OF THE PARISH OF CADDO FOR THE YEAR 2020, AND TO OTHERWISE PROVIDE WITH RESPECT THERETO

BE IT ORDAINED, by the Caddo Parish Commission in due, legal, and regular session convened, that the Caddo Parish Commission hereby adopts any and all assessments covering property owned by railways, tank car lines, and other public service corporations, and that the values named, fixed and reported be accepted and adopted as the values for all Parish purposes.

BE IT FURTHER ORDAINED, that the Commission Clerk shall give notice of this ordinance to the Assessor of Caddo Parish, Louisiana, and instruct him to levy and assess each applicable tax millage upon these values as set forth herein for the year 2020.

BE IT FURTHER ORDAINED, that if any provision or item of this ordinance or the application thereof is held invalid, such invalidity shall not affect other provisions, items, or applications which can be given effect without the invalid provisions, items or applications, and to this end, the provisions of this ordinance are hereby declared severable.

BE IT FURTHER ORDAINED, that this ordinance shall take effect ten (10) days after publication in the official journal.

BE IT FURTHER ORDAINED, that all ordinances or parts thereof in conflict herewith are hereby repealed.

Approved as to legal form:

\_\_\_\_\_  
Parish Attorney

\_\_\_\_\_  
Date



**ORDINANCE NO. of 2020**

BY THE CADDO PARISH COMMISSION:

AN ORDINANCE SETTING THE PARISH MILLAGE FOR THE PURPOSE OF PAYING PRINCIPAL AND INTEREST, DUE IN 2020 ON OUTSTANDING PARISH BOND ISSUES AND TO INSTRUCT THE ASSESSOR TO INCLUDE SAID MILLAGE ON THE TAX ROLL OF THE PARISH OF CADDO FOR THE YEAR 2020, AND TO OTHERWISE PROVIDE WITH RESPECT THERETO

WHEREAS, on August 1, 2007, the Parish of Caddo issued general obligation bonds in the total aggregate sum of \$10,000,000; and

WHEREAS, on August 1, 2008, the Parish of Caddo issued general obligation bonds in the total aggregate sum of \$10,000,000; and

WHEREAS, on September 17, 2009, the Parish of Caddo issued general obligation bonds in the total aggregate sum of \$10,000,000; and

WHEREAS, on May 15, 2015, the Parish of Caddo sold Refunding Bonds in the total aggregate sum of \$6,850,000; and

WHEREAS, on February 25, 2015 the Parish of Caddo sold Refunding Bonds in the total aggregate sum of \$6,345,000; and

WHEREAS, on May 19, 2016 the Parish of Caddo sold Refunding Bonds in the total aggregate sum of \$7,250,000; and

WHEREAS, it is necessary to levy a millage tax for the year 2020 in order to pay the principal and interest on said bonds, which will fall due in the year 2020.

NOW, THEREFORE, BE IT ORDAINED, by the Caddo Parish Commission, in due, legal, and regular session convened, that a special tax of 1.5 mills on the dollar on assessed valuation of all property subject to taxation within the whole of Caddo Parish, Louisiana, be and the same is hereby levied for the year 2020, for the purpose of paying principal and interest which will become due in the year 2020 on the aforesaid public improvement bonds and refunding bonds.

BE IT FURTHER ORDAINED, that the Commission Clerk shall give notice of this ordinance to the Assessor of Caddo Parish, Louisiana, and instruct him to levy and assess each tax as set forth herein for the year 2020.

BE IT FURTHER ORDAINED, that if any provision or item of this ordinance or the application thereof is held invalid, such invalidity shall not affect other provisions, items or applications which can be given effect without the invalid provisions, items or applications, and to this end, the provisions of this ordinance are hereby declared severable.

BE IT FURTHER ORDAINED, that this ordinance shall take effect ten (10) days after publication in the official journal.

BE IT FURTHER ORDAINED, that all ordinances or parts thereof in conflict herewith are hereby repealed.

Approved as to legal form:

\_\_\_\_\_  
Parish Attorney

\_\_\_\_\_  
Date

**ORDINANCE NO. 5967 OF 2020**

BY THE CADDO PARISH COMMISSION:

**AN ORDINANCE AMENDING THE BUDGET OF ESTIMATED REVENUES AND EXPENDITURES FOR THE GENERAL FUND FOR THE YEAR 2020 TO PROVIDE AN APPROPRIATION FOR COVID-19 TESTING SITES AND SMALL BUSINESS SUPPORT BY ISSUING "COVID KITS" AND TO OTHERWISE PROVIDE WITH RESPECT THERETO**

WHEREAS, the Parish of Caddo reported its first COVID-19 case on March 11, 2020; and

WHEREAS, the Parish of Caddo currently has over 4,700 cases and 255 deaths due to COVID-19; and

WHEREAS, the stay at home order was lifted May 15, 2020 and the State moved into Phase 2 of its reopening plan on June 4, 2020;

WHEREAS, when entering Phase 2, cases and deaths trended upward in Caddo Parish and reopening seeks to support economic recovery; and

WHEREAS, the Caddo Parish Commission would like to provide additional testing for the public to help combat the spread of COVID-19 and provide "COVID kits" to small business which will include non-contact thermometers, large quantities of hand sanitizer, PPE and plexiglass for register areas; and

WHEREAS it is necessary to amend the 2020 Budget to provide an appropriation of \$272,000 to purchase masks; and

NOW, THEREFORE, BE IT ORDAINED, by the Caddo Parish Commission in due, legal and regular session convened, that Budget of Estimated Revenues and Expenditures for the General Fund for the year 2020 is hereby amended as follows:

	<u>Budget Increase (Decrease)</u>
<u>General Fund</u>	
COVID-19	\$272,000
Fund Balance	(\$272,000)

BE IT FURTHER ORDAINED, that if any provision or item of this ordinance or the application thereof is held invalid, such invalidity shall not affect other provisions, items or applications which can be given effect without the invalid provisions, items or applications, and to this end the provisions of this ordinance are hereby declared severable.

BE IT FURTHER ORDAINED, that this ordinance shall take effect upon adoption.

BE IT FURTHER ORDAINED, that all ordinances or parts thereof in conflict herewith are hereby repealed.

Approved as to legal form:

\_\_\_\_\_  
Parish Attorney

\_\_\_\_\_  
Date

## Covid-19 Proposal Budget

Covid-19 Testing Operations	\$200,000
PPE/Testing Supplies (e.g. swabs, masks, gowns, gloves)	\$ 18,000
Signage (Small Businesses)	\$ 9,000
Plexiglass (Small Businesses)	\$ 9,000
Gallon of Hand Sanitizer	\$ 9,000
Non-Contact Thermometers	\$ 9,000
Personnel	\$ 9,000
Administrative Cost	\$ 9,000
<b>Total Budget</b>	<b>\$272,000</b>

**CARES Act Budget Proposal: Caddo Parish (FINAL)**  
**Drafted for the Caddo Parish Commission**  
**July 23, 2020**

**Introduction**

The COVID-19 pandemic has devastated the State of Louisiana with nearly 88,000 reported positive cases and over 3,300 deaths.<sup>1</sup> Caddo Parish is no exception—the Shreveport Times recently reported that “Caddo Parish had a seven-day stretch in early July with nine COVID-19 deaths and multiple days with more than 100 new cases.”<sup>2</sup>

In Caddo Parish alone, there are over 4,700 reported positive cases and over 255 deaths, in total.<sup>3</sup> As Louisiana’s stay at home order was lifted on May 15, 2020 and the State moved into Phase Two of its reopening plan on June 4, 2020, COVID-19 cases and deaths have continued to trend upward in Caddo Parish.

While case numbers and deaths due to COVID-19 continue to increase, the reopening seeks to support economic recovery (especially for small businesses), with the Shreveport Times reporting that “Caddo Parish came out on the downside with a -7.4 [percent] loss [in retail sales], from \$427,939,533 in February to \$396,017,533 in March. The City of Shreveport had a -6 percent loss, from \$360,153,564 in February down to \$337,003,091 in March.”<sup>4</sup>

*Confirmed COVID-19 Cases in Caddo Parish Over Time*<sup>5</sup>

---

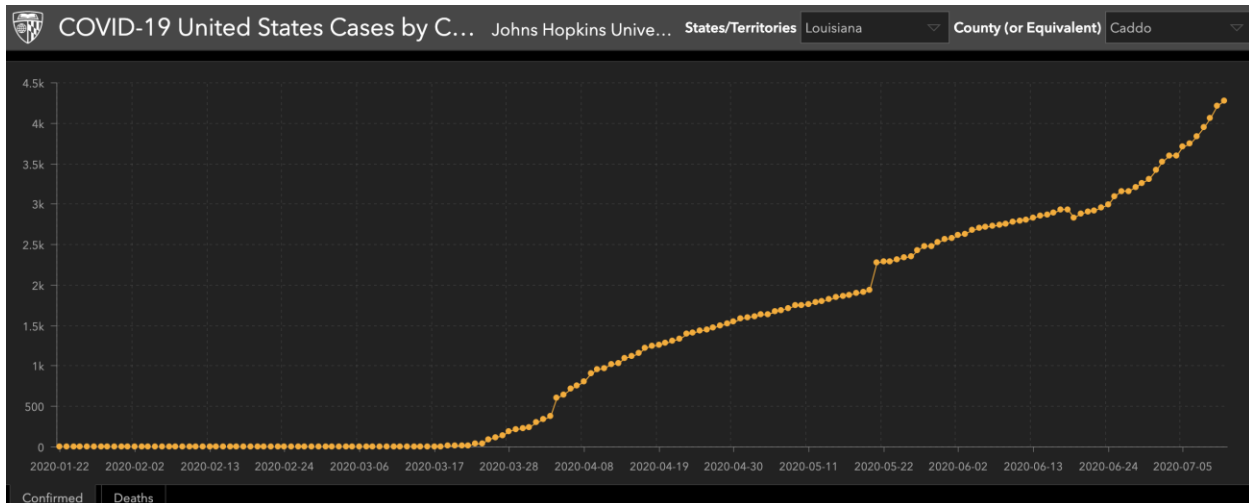
<sup>1</sup> July 18, 2020, Louisiana Department of Health, [Louisiana Coronavirus \(COVID-19\) Information](#)

<sup>2</sup> July 18, 2020, Shreveport Times, [What has caused the recent surge in COVID-19 cases in northwest Louisiana?](#)

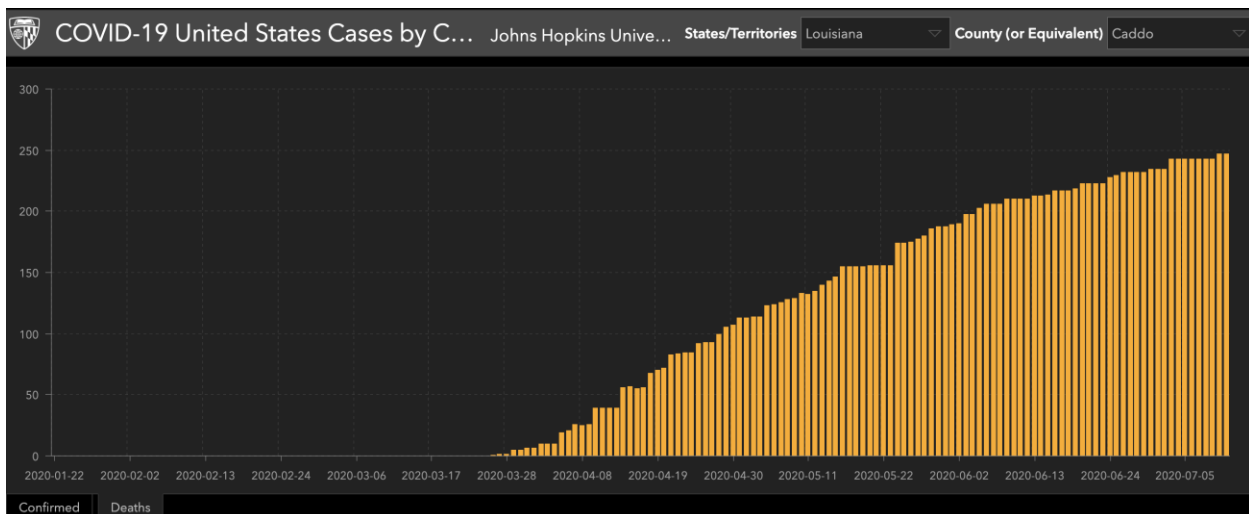
<sup>3</sup> Ibid.

<sup>4</sup> May 28, 2020, Shreveport Times, [Local expert talks economic outcomes for area businesses and what should be done moving forward](#)

<sup>5</sup> July 2020, Johns Hopkins University, [COVID-19 Coronavirus Resource Center](#)



*Confirmed Deaths Due to COVID-19 in Caddo Parish Over Time<sup>6</sup>*



Additionally, COVID-19 has had a major impact on mental health across the nation. According to a Kaiser Family Foundation poll performed in April 2020, “nearly half of adults in the United States reported that their mental health has been negatively impacted due to worry and stress over COVID-19.”<sup>7</sup> Additionally, a large body of research ties “social isolation and loneliness to poor mental health,” which may be particularly prominent amongst older adults, households with adolescents, and individuals who experienced job loss, as these groups are already at higher risk for poor mental health outcomes (e.g., depression, anxiety, suicidality).<sup>8</sup> Recent data also reports negative mental health impacts from front-line workers due to burnout.

<sup>6</sup> Ibid.

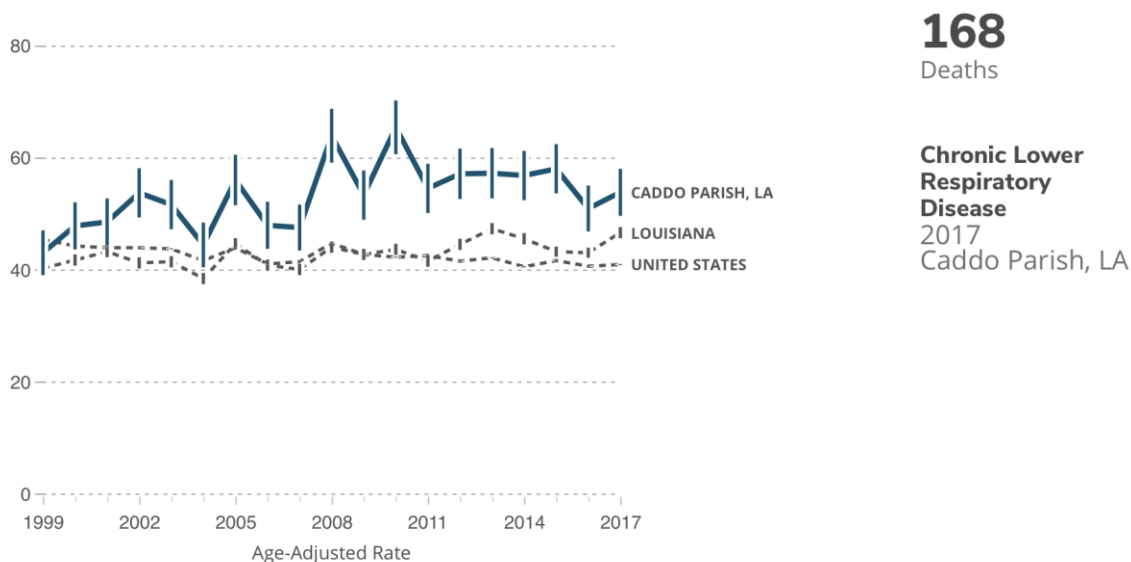
<sup>7</sup> April 21, 2020, Kaiser Family Foundation, [The Implications of COVID-19 for Mental Health and Substance Use](#)

<sup>8</sup> Ibid.

Prior to the COVID-19 pandemic, access to health and mental health services were already two areas of high concern for Caddo Parish due to its shortage of mental health providers and high percentage of Medicare Beneficiaries suffering from depression when compared to the state.<sup>9</sup> According to a Willis-Knighton Health System 2019 community needs assessment, Caddo Parish identified a goal of “improving mental health through prevention and by ensuring access to appropriate, quality mental health services.” Due to exacerbated mental health impacts related to COVID-19, there is an even greater need to support Caddo Parish communities with mental health services.

Moreover, some Caddo Parish community members are at higher risk for negative health outcomes that may be exacerbated by COVID-19 due to a variety of pre-existing health and socio-economic conditions. According to a needs assessment published by CHRISTUS Health Shreveport-Bossier, chronic lower respiratory diseases (e.g., COPD, Emphysema) are the third leading cause of death in the North West Louisiana Region.<sup>10</sup> Over the last two decades, Caddo Parish has steadily remained above the state and national average for chronic lower respiratory disease deaths per 100,000.<sup>11</sup>

*Chronic Lower Respiratory Disease Deaths per 100,000 in Caddo Parish, 2017*  
**Chronic Lower Respiratory Disease Deaths per 100,000 Pop**



This serves as just one example of the chronic disease burden that Caddo Parish is experiencing. Many pre-existing chronic diseases (e.g., coronary artery disease, cancer, type 2

<sup>9</sup> August 2019, Willis-Knighton Health System, [Community Health Needs Assessment](#)

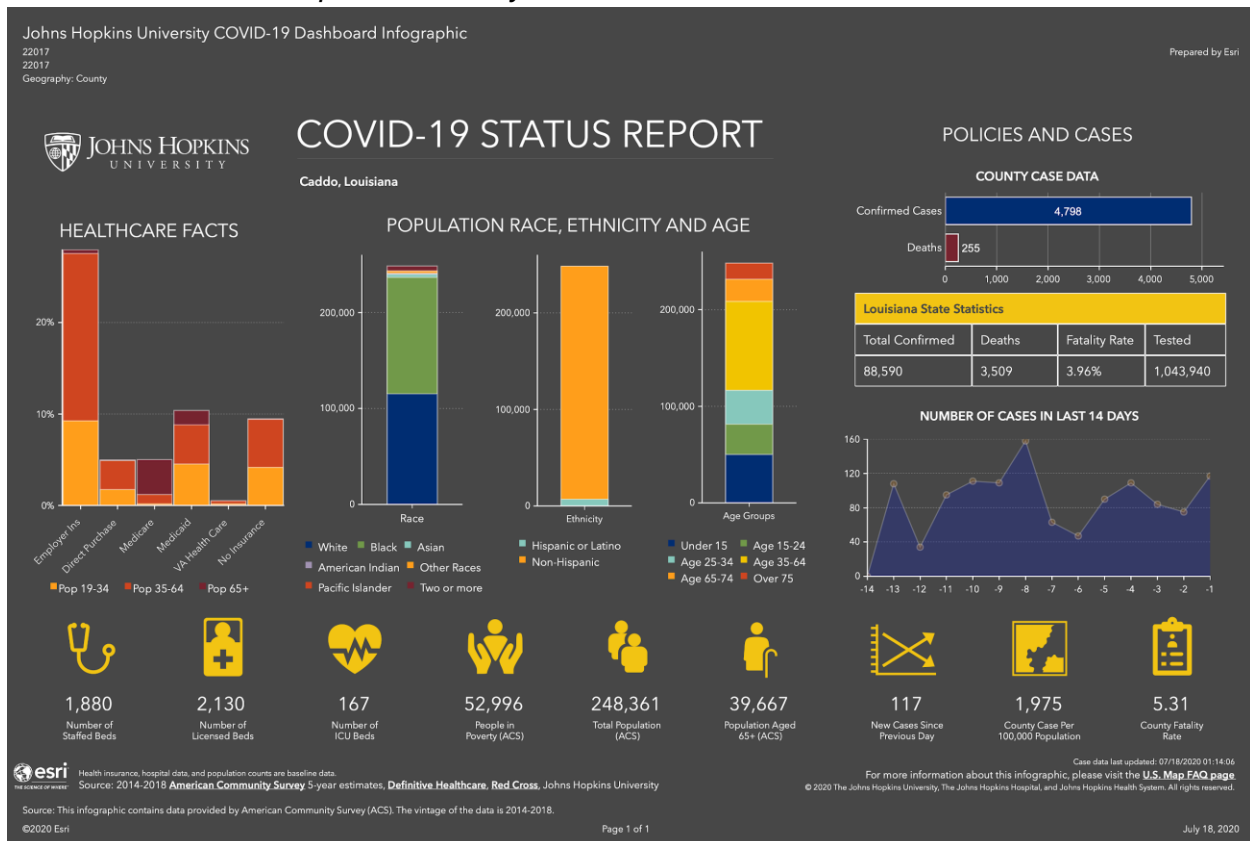
<sup>10</sup> 2019, CHRISTUS Health Shreveport-Bossier, [Community Health Needs Assessment](#).

<sup>11</sup> 2017, LiveStories Catalog via Centers for Disease Control and Prevention, [Caddo Parish COPD and Asthma Data Statistics](#).

diabetes) also serve as risk factors for experiencing severe illness due to COVID-19<sup>12</sup>, making early detection through testing especially important.

The infographic below demonstrates a breakdown of COVID-19 data for Caddo Parish, including healthcare facts (e.g., breakdown of insurance coverage), demographic data (e.g., population race, ethnicity, age), and policies and cases (e.g., trend of case count over the last two weeks).

### Johns Hopkins University COVID-19 Dashboard for Caddo Parish<sup>13</sup>



This status report denotes several key findings:

- COVID-19 cases have recently increased.
- Over 20% of the Caddo Parish population is experiencing poverty.
- The case fatality rate<sup>14</sup> in Caddo Parish (5.31%) is substantially higher compared to that of the country overall (3.9%).<sup>15</sup>

<sup>12</sup> July 2020, Centers for Disease Control and Prevention, [Evidence used to update the list of underlying medical conditions that increase a person's risk of severe illness from COVID-19](#).

<sup>13</sup> July 18, Johns Hopkins University, [COVID-19 Status Report for Caddo, Louisiana](#)

<sup>14</sup> Case fatality rate is calculated as total deaths divided by number of confirmed cases (represented as a percent). In other words, the proportion of people who die from a disease (i.e., the number of COVID-19 positive people who die from COVID-19 compared to COVID-19 positive people who do *not* die from COVID-19 over a specific period of time), illustrating disease severity.

<sup>15</sup> N.D., Johns Hopkins University, [Mortality Analyses](#)

- The majority of Caddo Parish relies on their employers for insurance coverage.
- The majority of individuals in Caddo Parish who have been diagnosed with COVID-19 are between the ages of 35 and 64.

Timely testing and diagnosis of COVID-19 is critical to helping slow disease spread, validated by the Louisiana Department of Health's testing plan and goals (e.g., achieve monthly statewide testing at 4% per capita).<sup>16</sup> The Caddo Parish Commissioners have been vital in supporting trusted local partners, such as Ochsner-Louisiana State University (Ochsner-LSU) Health and the One Hundred Men of Shreveport, in standing up test sites in communities (e.g., Caddo Heights). Utilizing such partners allows community members to both seek testing from trusted community partners and to leverage and maintain the local workforce. To date, Ochsner-LSU Health and the One Hundred Men of Shreveport have sponsored five testing events, testing well over 1,000 individuals between May 2020 and July 2020, and averaging 250 tests per event. Additionally, they have secured two testing sites to test one day per week through the end of 2020.

This proposal aims to leverage Caddo Parish's Coronavirus Aid, Relief, and Economic Security (CARES) Act funding to build upon current community COVID-19 testing site and small business support initiatives, and to augment additional services to address the ongoing local impacts and community needs (e.g., mental health care) of the COVID-19 pandemic.

### **Programmatic Proposal**

This proposal consists of two main activities, as outlined below. The Commission may adjust activities, as necessary. All programmatic activities are eligible for reimbursement through Caddo Parish's CARES Act funding.

#### *COVID-19 Testing Sites*

This program will build upon Ochsner-LSU Health / One Hundred Men of Shreveport's current COVID-19 testing infrastructure by adding two additional testing days at their two testing sites (i.e., Galilee Baptist Church and Morning Star Baptist Church). Funds will be utilized to secure additional testing supplies, continue to pay local laboratory and testing personnel, supply personal protective equipment (PPE), print signage, and other necessities to maintain and increase each site's COVID-19 testing capacity within the Caddo Heights and Lakeside communities. These testing sites currently have the laboratory capacity to analyze 2,000 tests per eight-hour shift, demonstrating their capabilities of supporting additional COVID-19 rapid testing within the Caddo Parish community.

Additionally, this program will augment existing testing site personnel to implement simple mental health screenings. With increased COVID-19 and mental illness prevalence, a pairing of these disease screenings is a unique and thoughtful way to provide a "one-stop-shop" for

---

<sup>16</sup> N.D., Louisiana Department of Health, [COVID-19 Testing Plan](#)



wellness in the community. After being swabbed, individuals being tested for COVID-19 will be asked by testing personnel if they are interested in completing a quick verbal mental health screening. If yes, the tester will verbally administer a validated mental health screening tool, allowing the individual to have an immediate understanding of their mental health needs. A threshold score will be determined to identify if additional resources (localized and subsidized) should be immediately shared with the individual before they drive away from the testing site. This data will also be anonymously compiled to support Caddo Parish’s existing mental health initiatives and inform a greater community needs gap analysis.

*Small Business Support*

It is well understood that wellness not only encompasses physical and mental health, but also economic security. With Phase Two of re-opening extended, it is an appropriate time to ensure that small businesses have the materials they need to meet regulatory measures to remain open and generate meaningful revenue again. This program would provide “COVID kits,” which will include non-contact thermometers (i.e., forehead thermometers), large quantities of hand sanitizer, PPE, and plexiglass for register areas (as needed). Not only will these physical measures support a compliant business, technical assistance can be provided to ensure all small business owners understand the ever-changing expectations related to occupancy and more as the pandemic evolves.

*Program Implementation and Staffing*

The [One Hundred Men of Shreveport](#) would serve as the primary organizer and implementer for the program, guided by the Commissioners’ oversight. This non-profit has a proven track record in the community and has been actively involved with the local COVID-19 response (e.g., testing sites in partnership with Ochsner-LSU Health). Upon award of funds, a timeline will be created for project roll out, informed by available community resources. Progress reports can be provided on a twice per month basis to include metrics on programmatic successes and additional information, as requested by the Commissioners. This will also prepare the Parish to be eligible for future grants with collecting optimal impact information that is often requested by grantors.

**Budget Proposal**

A preliminary budget, inclusive of time, labor, and materials, is shown in the table below.

*Programmatic Proposal Budget*

Material or Service	Cost
PPE (e.g., masks, gowns, gloves)	\$500,000

Testing supplies (e.g., swabs)	\$100,000
Signage	\$25,000
Plexiglass	\$25,000
Gallons of hand sanitizer	\$25,000
Non-contact thermometers	\$25,000
Personnel	\$25,000
Administrative Costs	\$25,000 <sup>17</sup>
<b>Total Cost:</b>	<b>\$750,000</b>

The Commissioners will work with the local CARES Act funding administrator to identify the available amount of funds earmarked for CARES Act activities within Caddo Parish to present a feasible proposal (see programmatic details and baseline figure above). Based on the amount of available funds, an itemized and informed budget will be created in alignment with available funds to support the program described above. Close coordination between the Commissioners and Caddo Parish / City of Shreveport will ensure that all outlined activities will be approved for reimbursement and will not contribute to duplication of federal benefits. A documentation process to track and report all activities related to this program will be built upon award.

---

<sup>17</sup> Dependent on grant amount, required documentation, and extent of administrative needs.