

CADDO PARISH JUVENILE SERVICES

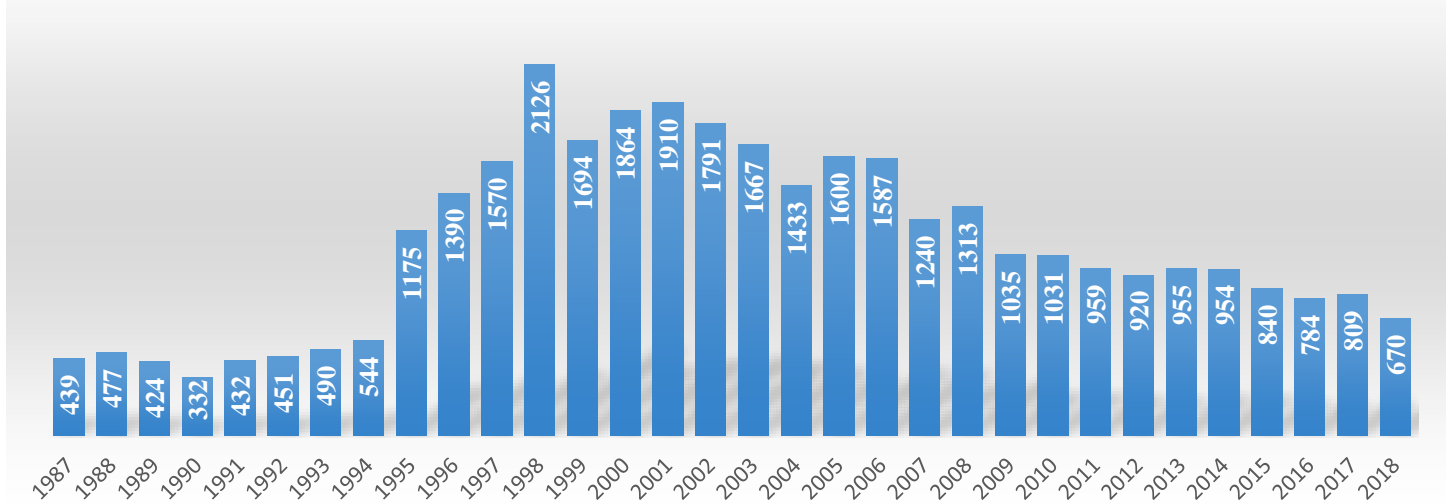
Annual Update

2018



When a child is arrested in Caddo Parish for a delinquent offense, the officer can take the child (1) home and issue a summons to appear in Court, (2) to the Misdemeanor Referral Center (where he/she is picked up by a parent and issued a summons), or (3) to juvenile detention. At intake in detention, a Juvenile Judge determines if the child will be admitted to detention and held pending trial or released to a parent and issued a summons. Generally speaking, violent and repeat offenses are held in detention for public safety.

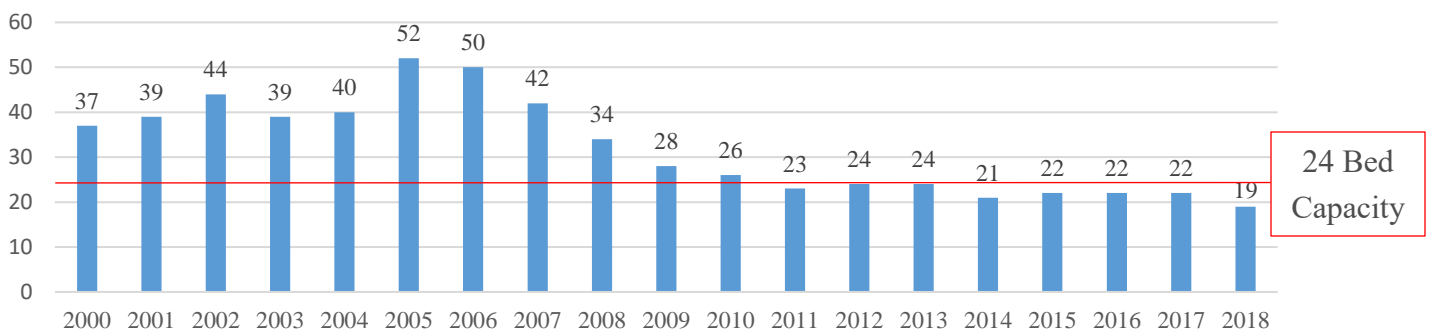
Juvenile Detention Center Intake



The population in Juvenile Detention is down by 64% since 2000. (It peaked in 1998 at 2,126 – it's down 68% since then).

In 2013, the Louisiana Legislature issued new standards for juvenile detention. By those standards, the cells in Caddo Parish Juvenile Detention can only hold one child, making the capacity for detention 24 youth.

AVERAGE DAILY POPULATION

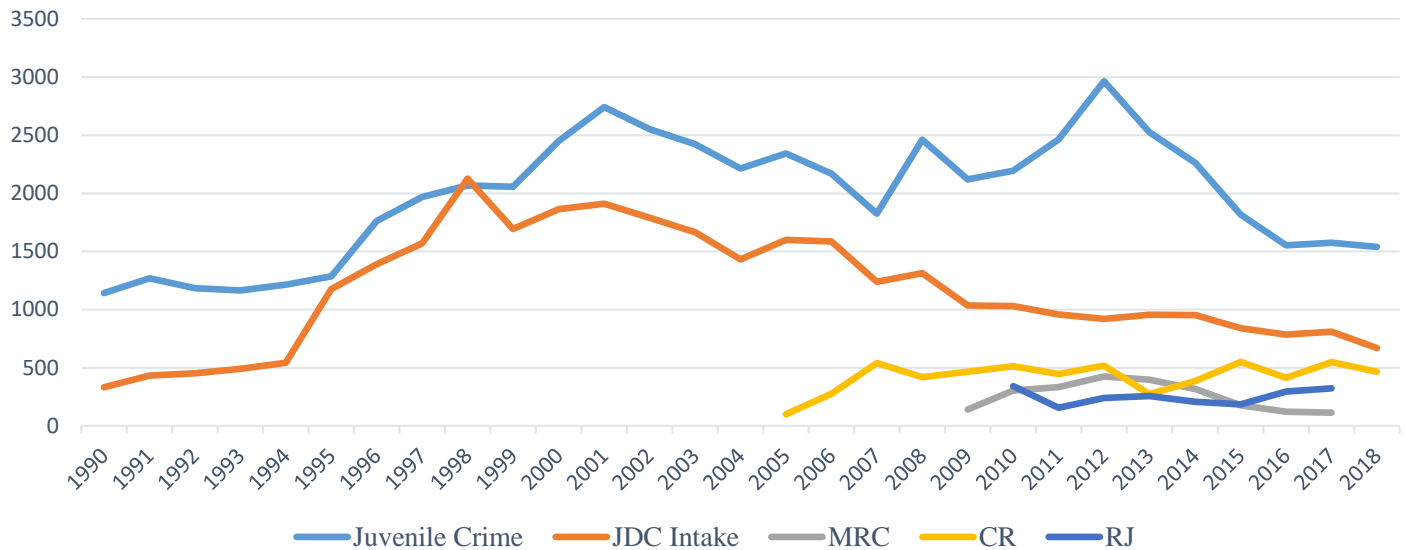


24 Bed Capacity

Caddo Parish Juvenile Services Annual Update 2018

In the mid-1990's, concern about juvenile crime across the nation increased and use of detention for non-violent and low-level charges increased as well. In 2005, Juvenile Court began utilizing alternatives to detention, beginning with Conflict Resolution (CR), which handles most school fights in Caddo Parish. In 2009, the Misdemeanor Referral Center (MRC) opened, taking in low-level and non-violent offenses. In 2010, the Court added a diversion program, Restorative Justice (RJ), for first-time offenders with less serious offenses. Using these alternatives to detention allows the Court to address each child's misconduct without exposing them to the negative influences of detention.

Alternatives to Detention



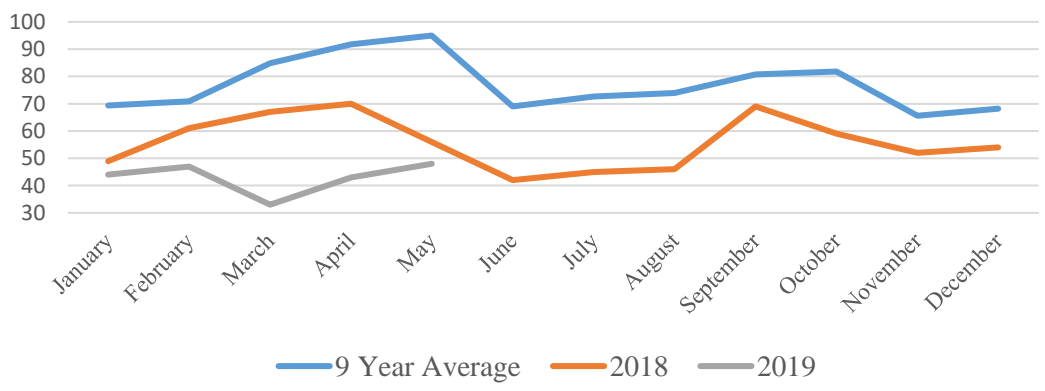
2018 Detention Intake: 670

African American
Male 485 -- 72%
Female 95 -- 14%

Caucasian
Male 61 -- 9%
Female 19 -- 3%

Other
Male 8 -- 1%
Female 2 -- 0%

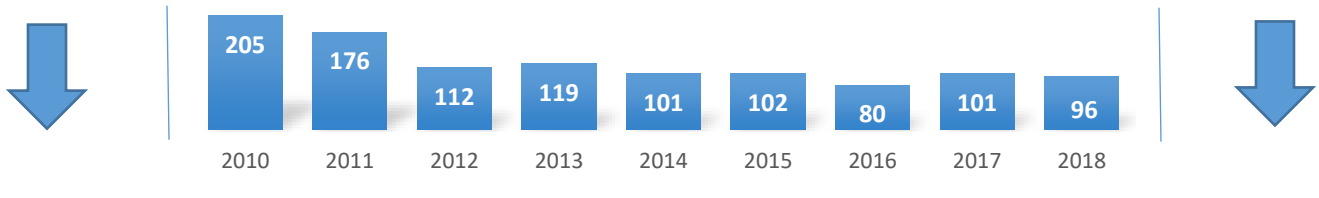
Intake to Juvenile Detention by Month



Caddo Parish Juvenile Services Annual Update 2018

The Detention Center holds children who are pending trial. When a child is sentenced to prison, they are placed in State Custody with the Office of Juvenile Justice. Historically, Caddo Parish has had the highest Custody Rate in the State. **But, since 2010, children from Caddo Parish in State Custody is down 53%.**

Children in State Custody from Caddo Parish



Lower detention numbers save Parish taxes. Lower State custody rates save State taxes.

INNOVATIVE PROGRAMS:

Caddo Parish was the first Juvenile Court in the State to have a **Juvenile Drug Court**, a **Juvenile Mental Health Court**, a **Family Preservation Court** and a **Human Trafficking Court**.

CADDO PARISH JUVENILE SERVICES

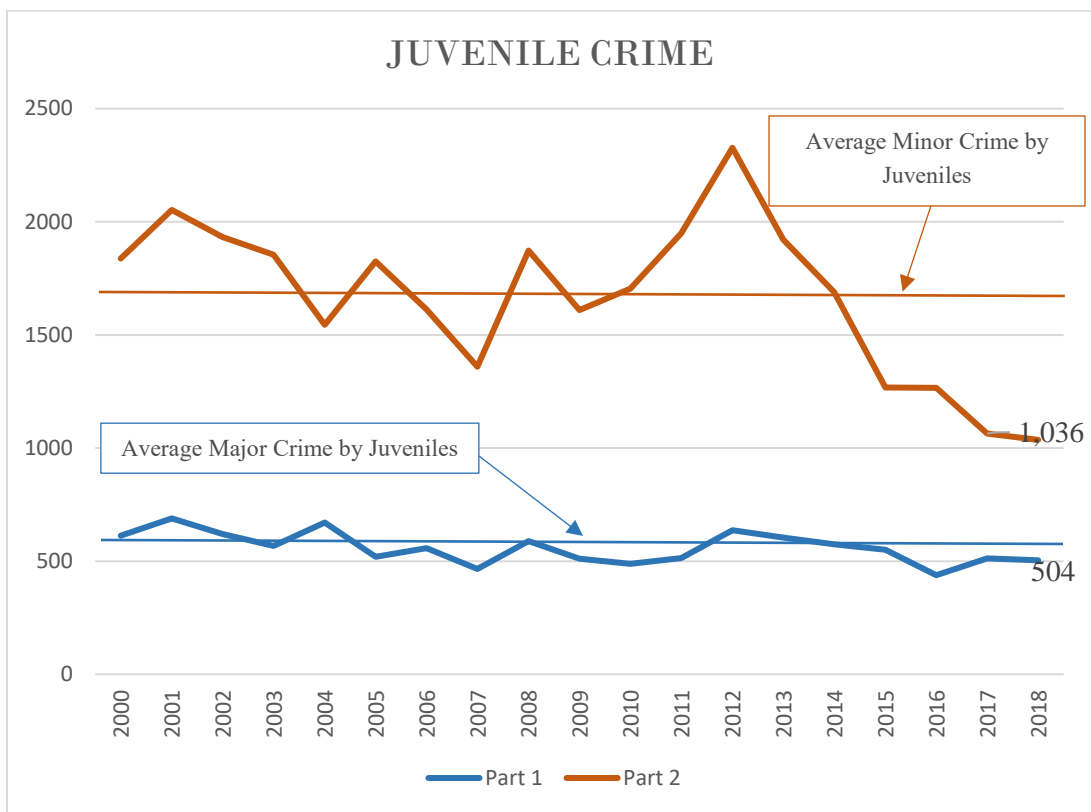
Incarcerating fewer children, providing an annual savings of over \$3,000,000 in Parish taxes.

More than 150 Community Based Programs utilized by the Probation Staff, including:

- Volunteers for Youth Justice
- The Community Foundation of North Louisiana
- Community Based GED/Hi-Set Programs
- American Marine Institute (Alternative Education Program)
- Goodwill Industries Job Training program
- Mental Health Rehabilitation Programs
- Shreveport Job Corps
- Louisiana National Guard Youth Challenge Program
- Caddo Parish Sheriff's Anger Management Program and Personal Responsibility Program
- Shreveport Green
- Community Services Sites in the Parish

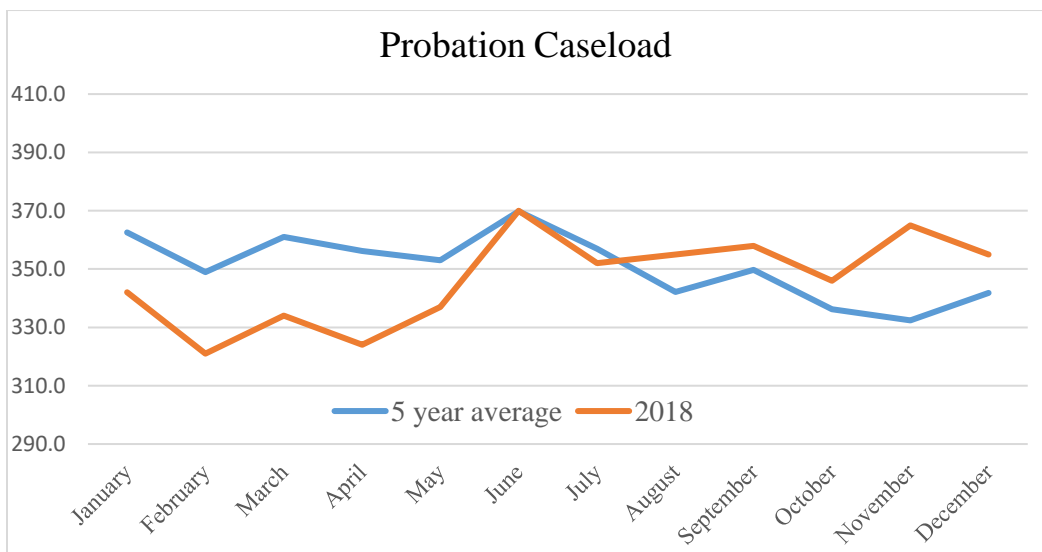
Saving tax dollars is good – but what about Crime Rates?

Since 1991, the number of major crimes committed by juveniles has averaged 610. It peaked in 1996 at 981. In 2018, there were 504 – 17% below the average.



The average for Part 1 crime (Murder, Rape, Robbery, Burglary, Aggravated Assault, Felony Theft and Auto Theft) since 2000 is 610. At 504, in 2018, Part 1 crime is down 17% below the average.

The average for Part 2 crime (Simple Battery, Disturbing the Peace, Drugs, Etc.) since 2000 is 1,670. At 1,036, in 2018, Part 2 crime is down 38% below the average.



PROBATION

The Average Monthly Probation Caseload for 2018 was

346/20